

Amphenol

PROCESS INSTRUCTION

Number: 123GB-0845

Issue: 10

Page:

Print test box



1 of 11

Products are sold subject to Amphenol's conditions of sale ("the standard conditions"). All specifications and statements contained herein are believed to be correct at the time a printing, but no representation or warranty, express or implied is, given as to any specification or statement contained herein. Product specifications including performance characteristics are typical only and subject to deviation. Specifications are also subject to change without notice. Users should not assume that all safety measures are indicated or that measures may not be required. No representation or warranty, express or implied, is given that any use of products (including any stated or suggested use) does not infringe any patent, registered design or other third-party rights and no stated or suggested use of products can be taken to recommend any such infringement.

**** FOLLOW ALL LOCAL HEALTH AND SAFETY POLICIES ****

123GB-0845 'Rhino & Rhino Guard Torque Setting'

Key Points with reference to this assembly.

1. This document details all torque values for Rhino & Rhino Guard Product Range.
2. Unless specified on deviation drawing, please adhere to standard process (tightening method / torque value).
3. Dependant on the environmental conditions and the application the connectors will be subjected to, there may be a necessity to apply an appropriate thread lock adhesive before fitting locking ring to the rear of the connector. Please contact factory for further advice.
4. Refer to the catalogue for part number breakdown.
5. This document covers different accessory type.
See the next page for variant types and reference views.
6. Tooling supplied separate.

List of Process Documents used in this PI

List of Tools used in this PI

Strap Wrench (torque setting)
294GB-5063-XX 90° Pin Contact Tightening
294GB-5064-XX 90° Skt Contact Tightening
294GB-5065-XX Castellated Jam Nut Tightening
294GB-5066-XX 90° Skt Contact (legacy) Tightening
<i>XX refers to connector shell size</i>



Rhino Connectors



Rhino Guard Connectors

Release / Changes:	ECN26190	ECN31112				
Originator:	IC Ciochina	E Eribo				
Date:	12/07/2022	04/02/2025				

Amphenol

PROCESS INSTRUCTION

Number: 123GB-0845

Issue: 10

Page:

Print test box



2 of 11

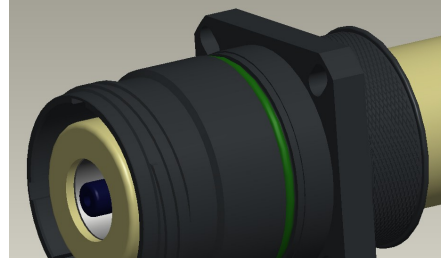
Reference views.

WPTV-00XXXX-XXX-XPXA
Pin variant



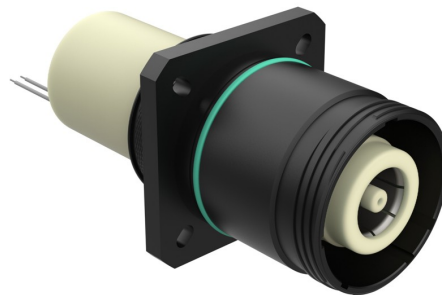
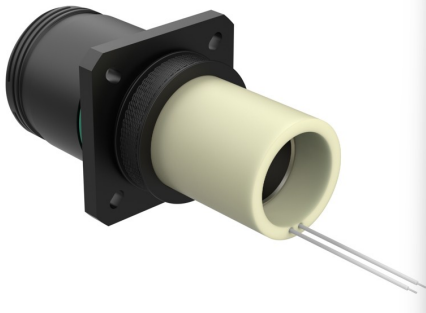
General assembled view/s of the assembly, for reference.

WPTV-00XXXX-XXX-XSXA
Socket variant



General assembled view/s of the assembly, for reference.

WPTV-ED-00XXXX-XXX-XSXA
Socket variant



General assembled view/s of the assembly, for reference.

Release / Changes:	ECN26190	ECN31112					
Originator:	IC Ciochina	E Eribo					
Date:	12/07/2022	04/02/2025					

Amphenol

PROCESS INSTRUCTION

Number: 123GB-0845

Issue: 10

Page:

Print test box



3 of 11

Reference views.

WPTV-00XXXX-XXX-XPXB
Pin variant



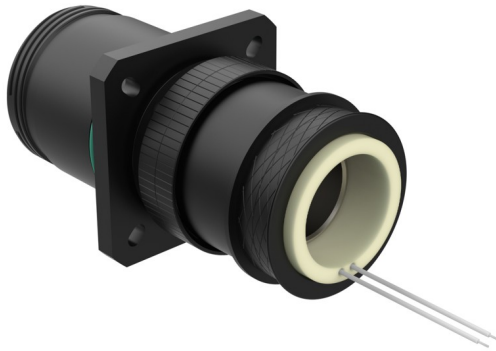
General assembled view/s of the assembly, for reference.

WPTV-00XXXX-XXX-XSXB
Socket variant



General assembled view/s of the assembly, for reference.

WPTV-ED-00XXXX-XXX-XSXB
Socket variant



General assembled view/s of the assembly, for reference.

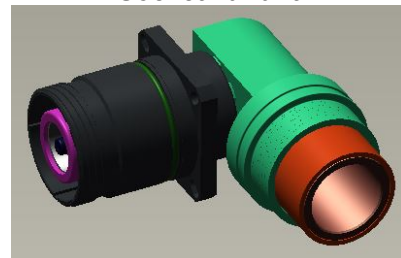
Reference views.

WPTV-00XXXX-XXX-XPXC
Pin variant



General assembled view/s of the assembly, for reference.

WPTV-00XXXX-XXX-XSXC
Socket variant



General assembled view/s of the assembly, for reference.

Release / Changes:	ECN26190	ECN31112					
Originator:	IC Ciochina	E Eribo					
Date:	12/07/2022	04/02/2025					

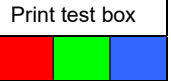
Amphenol

PROCESS INSTRUCTION

Number: 123GB-0845

Issue: 10

Page:



4 of 11

OP 10. Torque Requirements

The sections below detail the connector type and relevant torque / tool information for all Rhino & Rhino Guard Connectors in the standard Product Range

**OP 11a. Plug (all styles / genders) Plain Backshell.
WPTV-06xxXX-XXX-XxXA variant & WPTV-ED-06xxXX-XXX-XPXA variant.**

Part Numbers	Tools		Torque Value
WPTV-06xx13-85-XxXA	Strap Wrench	294GB-5069-13-X	12.2 Nm
WPTV-06xx15-120-XxXA	Strap Wrench	294GB-5069-15-X	13.1 Nm
WPTV-06xx17-185-XxXA	Strap Wrench	294GB-5069-17-X	13.1 Nm
WPTV-06xx21-340-XxXA	Strap Wrench	294GB-5069-21-X	15.4 Nm
WPTV-06xx23-500-XxXA	Strap Wrench	294GB-5069-23-X	15.4 Nm
WPTV-06xx25-1000-XxXA	Strap Wrench	294GB-5069-25-X	15.4 Nm
WPTV-ED-06xx15-85-XPXA	Strap Wrench	294GB-5069-15-X	13.1 Nm
WPTV-ED-06xx17-120-XPXA	Strap Wrench	294GB-5069-17-X	13.1 Nm
WPTV-ED-06xx21-185-XPXA	Strap Wrench	294GB-5069-21-X	15.4 Nm
WPTV-ED-06xx23-340-XPXA	Strap Wrench	294GB-5069-23-X	15.4 Nm
WPTV-ED-06xx25-500-XPXA	Strap Wrench	294GB-5069-25-X	15.4 Nm
WPTV-ED-06xx29-1000-XPXA	Strap Wrench	294GB-5069-29-X	15.4 Nm



Release / Changes:	ECN26190	ECN31112				
Originator:	IC Ciochina	E Eribo				
Date:	12/07/2022	04/02/2025				

Amphenol

PROCESS INSTRUCTION

Number: 123GB-0845

Issue: 10

Page:

Print test box



5 of 11

**OP 11b. Rec (all styles / genders) Plain Backshell
WPTV-XXxxXX-XXX-XxXA variant & WPTV-ED-XXxxXX-XXX-XPXA variant.**

Part Numbers	Tools		Torque Value
WPTV-XXxx13-85-XxXA	Strap Wrench	294GB-5070-13-X	12.2 Nm
WPTV-XXxx15-120-XxXA	Strap Wrench	294GB-5070-15-X	13.1 Nm
WPTV-XXxx17-185-XxXA	Strap Wrench	294GB-5070-17-X	13.1 Nm
WPTV-XXxx21-340-XxXA	Strap Wrench	294GB-5070-21-X	15.4 Nm
WPTV-XXxx23-500-XxXA	Strap Wrench	294GB-5070-23-X	15.4 Nm
WPTV-XXxx25-1000-XxXA	Strap Wrench	294GB-5070-25-X	15.4 Nm
WPTV-ED-XXxx15-85-XxXA	Strap Wrench	294GB-5070-15-X	13.1 Nm
WPTV-ED-XXxx17-120-XxXA	Strap Wrench	294GB-5070-17-X	13.1 Nm
WPTV-ED-XXxx21-185-XxXA	Strap Wrench	294GB-5070-21-X	15.4 Nm
WPTV-ED-XXxx23-340-XxXA	Strap Wrench	294GB-5070-23-X	15.4 Nm
WPTV-ED-XXxx25-500-XxXA	Strap Wrench	294GB-5070-25-X	15.4 Nm
WPTV-ED-XXxx29-1000-XxXA	Strap Wrench	294GB-5070-29-X	15.4Nm



Release / Changes:	ECN26190	ECN31112					
Originator:	IC Ciochina	E Eribo					
Date:	12/07/2022	04/02/2025					

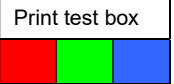
Amphenol

PROCESS INSTRUCTION

Number: 123GB-0845

Issue: 10

Page:



6 of 11

OP 12a.	Plug (all styles / genders) Straight Backshell WPTV-06xxXX-XXX-XxB variant & WPTV-ED-06xxXX-XXX-XPxB variant.		
Part Numbers	Tools		Torque Value
WPTV-06xx13-85-XxB	Strap Wrench	294GB-5069-13-X	12.2 Nm
WPTV-06xx15-120-XxB	Strap Wrench	294GB-5069-15-X	13.1 Nm
WPTV-06xx17-185-XxB	Strap Wrench	294GB-5069-17-X	13.1 Nm
WPTV-06xx21-340-XxB	Strap Wrench	294GB-5069-21-X	15.4 Nm
WPTV-06xx23-500-XxB	Strap Wrench	294GB-5069-23-X	15.4 Nm
WPTV-06xx25-1000-XxB	Strap Wrench	294GB-5069-25-X	15.4 Nm
WPTV-ED-06xx15-85-XPxB	Strap Wrench	294GB-5069-15-X	13.1 Nm
WPTV-ED-06xx17-120-XPxB	Strap Wrench	294GB-5069-17-X	13.1 Nm
WPTV-ED-06xx21-185-XPxB	Strap Wrench	294GB-5069-21-X	15.4 Nm
WPTV-ED-06xx23-340-XPxB	Strap Wrench	294GB-5069-23-X	15.4 Nm
WPTV-ED-06xx25-500-XPxB	Strap Wrench	294GB-5069-25-X	15.4 Nm
WPTV-ED-06xx29-1000-XPxB	Strap Wrench	294GB-5069-29-X	15.4 Nm



Release / Changes:	ECN26190	ECN31112					
Originator:	IC Ciochina	E Eribo					
Date:	12/07/2022	04/02/2025					

Amphenol

PROCESS INSTRUCTION

Number: 123GB-0845

Issue: 10

Page:

Print test box



7 of 11

OP 12b. Rec (all styles / genders) Straight Backshell WPTV-XXxxXX-XXX-XxXB variant & WPTV-ED-XXxxXX-XXX-XxXB variant.

Part Numbers	Tools		Torque Value
WPTV-XXxx13-85-XxXB	Strap Wrench	294GB-5070-13-X	12.2 Nm
WPTV-XXxx15-120-XxXB	Strap Wrench	294GB-5070-15-X	13.1 Nm
WPTV-XXxx17-185-XxXB	Strap Wrench	294GB-5070-17-X	13.1 Nm
WPTV-XXxx21-340-XxXB	Strap Wrench	294GB-5070-21-X	15.4 Nm
WPTV-XXxx23-500-XxXB	Strap Wrench	294GB-5070-23-X	15.4 Nm
WPTV-XXxx25-1000-XxXB	Strap Wrench	294GB-5070-25-X	15.4 Nm
WPTV-ED-XXxx15-85-XxXB	Strap Wrench	294GB-5070-15-X	13.1 Nm
WPTV-ED-XXxx17-120-XxXB	Strap Wrench	294GB-5070-17-X	13.1 Nm
WPTV-ED-XXxx21-185-XxXB	Strap Wrench	294GB-5070-21-X	15.4 Nm
WPTV-ED-XXxx23-340-XxXB	Strap Wrench	294GB-5070-23-X	15.4 Nm
WPTV-ED-XXxx25-500-XxXB	Strap Wrench	294GB-5070-25-X	15.4 Nm
WPTV-ED-XXxx29-1000-XxXB	Strap Wrench	294GB-5070-29-X	15.4 Nm



Note: Please refer to appendix A for how to use a strap wrench.

Release / Changes:	ECN26190	ECN31112					
Originator:	IC Ciochina	E Eribo					
Date:	12/07/2022	04/02/2025					

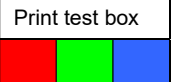
Amphenol

PROCESS INSTRUCTION

Number: 123GB-0845

Issue: 10

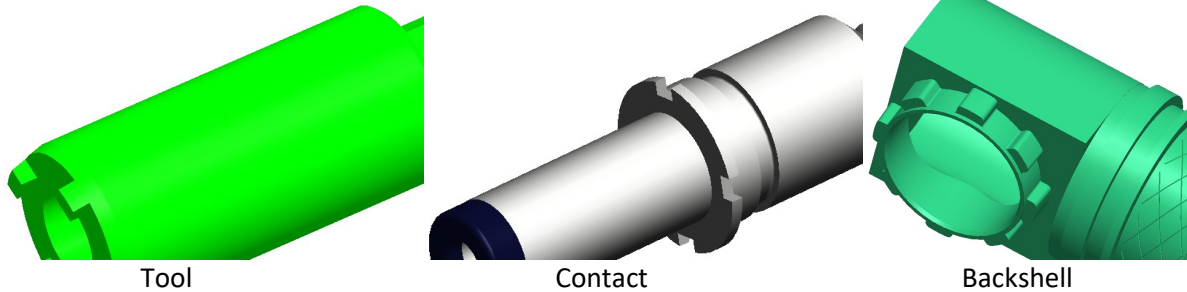
Page:



8 of 11

**OP 13. Rec and Plug (all styles) 90° Backshell Pin
WPTV-XXxxXX-XXX-XPXC variant.**

Part Numbers	Tool	Torque Value (Min)	Torque Value (Max)
WPTV-XXxx13-85-XPXC	294GB-5063-13	1.1 Nm	1.9 Nm
WPTV-XXxx15-120-XPXC	294GB-5063-15	3.7 Nm	6.6 Nm
WPTV-XXxx17-185-XPXC	294GB-5063-17	9 Nm	16.2 Nm
WPTV-XXxx21-340-XPXC	294GB-5063-21	17.5 Nm	32.1 Nm
WPTV-XXxx23-500-XPXC	294GB-5063-23	30 Nm	55.7 Nm
WPTV-XXxx25-1000-XPXC	294GB-5063-25	30 Nm	55.7 Nm



Tool

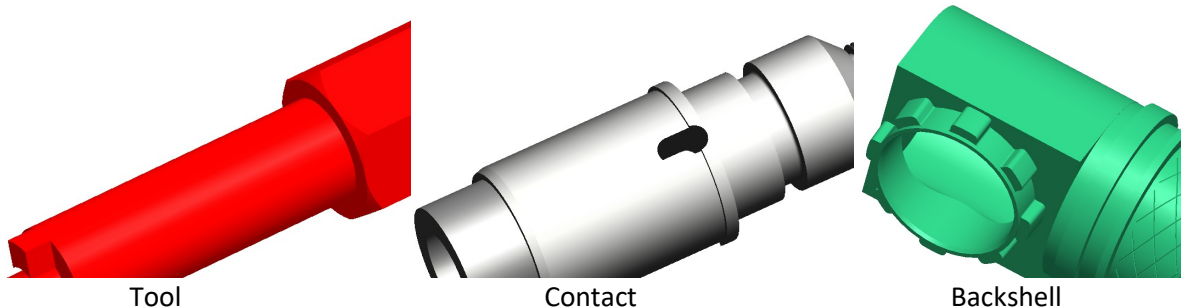
Contact

Backshell

Apply axial load when tightening to specified torque. Ensure tool castellations remain engaged with contact.

**OP 14. Rec and Plug (all styles) 90° Backshell Skt, Current Design
WPTV-XXxxXX-XXX-XSXC variant.**

Part Numbers	Tool	Torque Value (MIN)	Torque Value (MAX)
WPTV-XXxx13-85-XSXC	294GB-5064-13	1.1 Nm	1.9 Nm
WPTV-XXxx15-120-XSXC	294GB-5064-15	3.7 Nm	6.6 Nm
WPTV-XXxx17-185-XSXC	294GB-5064-17	9 Nm	16.2 Nm
WPTV-XXxx21-340-XSXC	294GB-5064-21	17.5 Nm	32.1 Nm
WPTV-XXxx23-500-XSXC	294GB-5064-23	30 Nm	55.7 Nm
WPTV-XXxx25-1000-XSXC	294GB-5064-25	30 Nm	55.7 Nm



Tool

Contact

Backshell

Apply axial load when tightening to specified torque. Ensure tool castellations remain engaged with contact.

Release / Changes:	ECN26190	ECN31112				
Originator:	IC Ciochina	E Eribo				
Date:	12/07/2022	04/02/2025				

Amphenol

PROCESS INSTRUCTION

Number: 123GB-0845

Issue: 10

Page:

Print test box



9 of 11

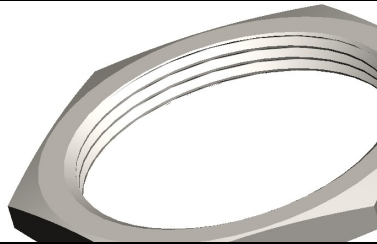
OP 15.

Intentionally Left Blank

OP 16.

**Rec and Plug (all styles / genders) Jam-Nut
WPTV-07xxXX-XXX-XxXx variant & WPTV-ED-07xxXX-XXX-XSXx variant.**

Part Numbers	Tool	Torque Value
WPTV-07xx13-85-XxXx	Customer standard tooling for Jam-Nut assembly e.g. box spanner / torque wrench etc.	6.2/6.8 Nm
WPTV-07xx15-120-XxXx		7.9/8.5 Nm
WPTV-07xx17-185-XxXx		9.0/9.6 Nm
WPTV-07xx21-340-XxXx		11.3/12.4 Nm
WPTV-07xx23-500-XxXx		12.4/13.6 Nm
WPTV-07xx25-1000-XxXx		13.6/14.7 Nm
WPTV-ED-07xx15-85-XSXx		7.9/8.5 Nm
WPTV-ED-07xx17-120-XSXx		9.0/9.6 Nm
WPTV-ED-07xx21-185-XSXx		11.3/12.4 Nm
WPTV-ED-07xx23-340-XSXx		12.4/13.6 Nm
WPTV-ED-07xx25-500-XSXx		13.6/14.7 Nm
WPTV-ED-07xx29-1000-XSXx		13.6/14.7 Nm



Release / Changes:	ECN26190	ECN31112					
Originator:	IC Ciochina	E Eribo					
Date:	12/07/2022	04/02/2025					

Amphenol

PROCESS INSTRUCTION

Number: 123GB-0845

Issue: 10

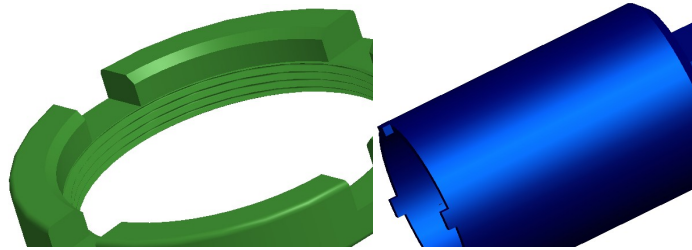
Page:

Print test box



10 of 11

OP 17.	Rec and Plug (all styles / genders) Castellated Nut WPTV-07xxXX-XXX-XxX(W587) variant.	
Part Numbers	Tool	Torque Value
WPTV-07xx13-85-XxXx(W587)	294GB-5065-13	6.2/6.8 Nm
WPTV-07xx15-120-XxXx(W587)	294GB-5065-15	7.9/8.5 Nm
WPTV-07xx17-185-XxXx(W587)	294GB-5065-17	9.0/9.6 Nm
WPTV-07xx21-340-XxXx(W587)	294GB-5065-21	11.3/12.4 Nm
WPTV-07xx23-500-XxXx(W587)	294GB-5065-23	12.4/13.6 Nm
WPTV-07xx25-1000-XxXx(W587)	294GB-5065-25	13.6/14.7 Nm



Apply axial load when tightening to specified torque. Ensure tool castellations remain engaged with nut.

Release / Changes:	ECN26190	ECN31112					
Originator:	IC Ciochina	E Eribo					
Date:	12/07/2022	04/02/2025					

Amphenol

PROCESS INSTRUCTION

Number: 123GB-0845

Issue: 10

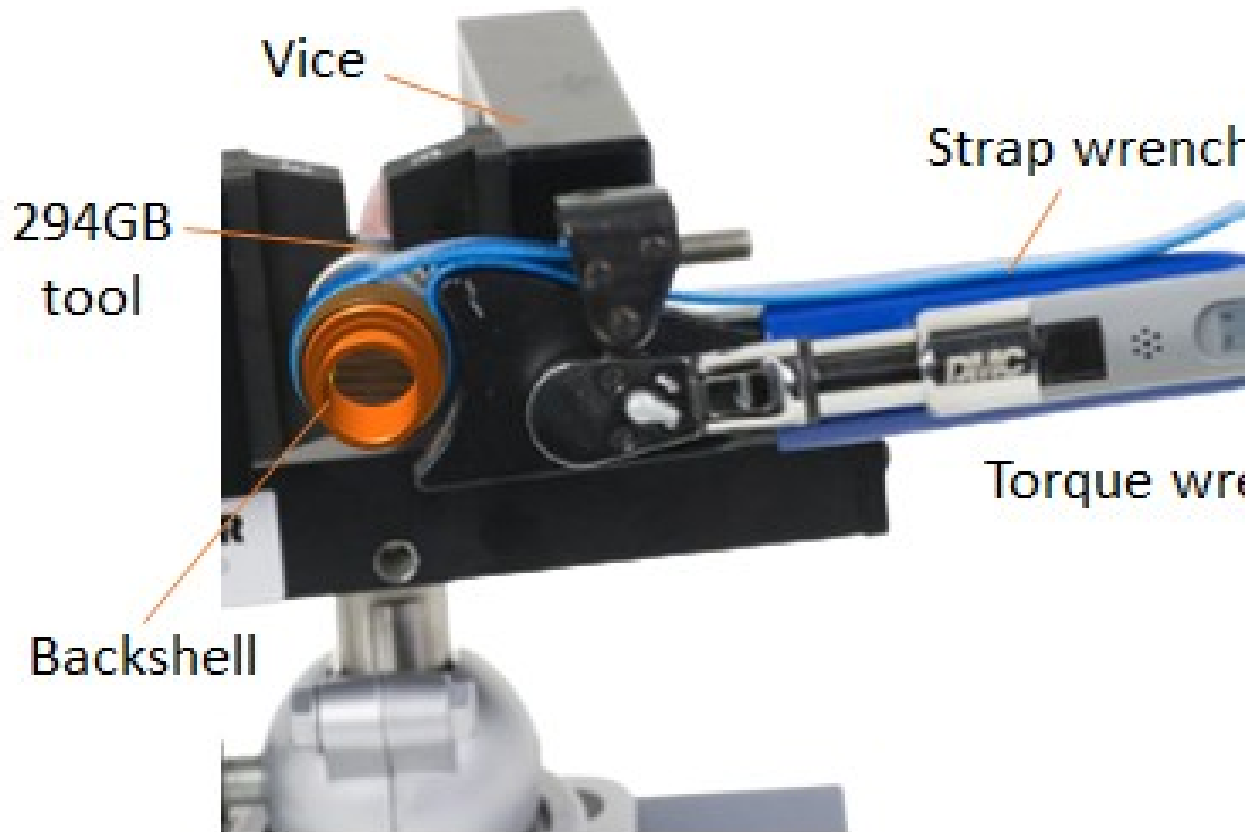
Page:

Print test box



11 of 11

Appendix A



Images for reference only, contact factory for more details



Release / Changes:	ECN26190	ECN31112					
Originator:	IC Ciochina	E Eribo					
Date:	12/07/2022	04/02/2025					